

BLACKMORE VALE LINE COMMUNITY RAIL PARTNERSHIP NEWSLETTER

BVCRP covering the stations and route from Tisbury, Crewkerne, Gillingham, Templecombe Yeovil Junction and Sherborne



Winter 2018/2019

Our six stations and Yeovil Railway Centre have put on fabulous Christmas displays, scooping many awards at the annual awards ceremony for our Decoration Station competition. You can read more about this inside.

Since our last edition we now have a new Community Rail Manager, Andrew Harrowell, who has been busy submitting a bid for DfT funding and has put forward projects from Gillingham and Yeovil Junction for consideration.

Results will be known in late Spring.



**Tisbury Station's
inspiring recycling!
Well done Sarah.**

***"Blackmore Vale Line
Community Rail
Partnership -
Local people & businesses
working in partnership with
the railways."***

*Follow us and find out what we
are up to on Twitter*

**Blackmore
Vale CRP
@crpVale**



In This Issue

- Decoration Station
- Tisbury station
- Friends of Templecombe Station
- Friends of Gillingham Station
- Yeovil Junction
- Yeovil Railway Centre
- Friends of Crewkerne station
- Sherborne station
- DfT bid & Lost railway workers of WW1



**Crewkerne Station - Winner of the Blackmore Vale Line CRP Trophy
for the station gaining the most public votes.
Chairman Gail Coleshill pictured with the trophy.**

www.blackmorevaletrains.com

Decoration Station Christmas Competition

Blackmore Vale Line Community Rail Partnership announces the launch of our 2018 'Decoration Station' Christmas competition.



As the festive season loomed ever closer volunteers from our station groups were busy creating wonderful festive scenes in the booking halls. Always an enjoyable time of year when our volunteers work hard to provide rail-users with celebratory cheer and Christmas displays.

There are many talented crafters amongst our volunteers, evident with the high standard of hand-crafted decorations, garlands and wreaths. We also have a number of very creative individuals who regularly produce wonderful surprises and little touches to make the booking halls look so fabulous throughout the year and especially during the Christmas period.

Decoration Station competition celebrates and promotes the hard work of our volunteers and station staff. It is an inter-station event involving stations belonging to the rail partnership: Crewkerne, Tisbury, Gillingham, Templecombe, Sherborne and Yeovil Junction and we always include the talented crew from Yeovil Railway Centre.

'Our volunteers get on really well, a friendly spirit thrives and the event is viewed as a bit of seasonal fun.'



We were pleased to work with local people with various areas of expertise who form our judging team. We couldn't do this without them. Our judges were Louise Burks, Director of the Gardens Group, Derek Beer, Councillor and Transport Forum Chairman, Paul Brighten, retired railway manager and Glen Hatherley Station Manager for the South of England Line. Public voting 2018 opened on 1st December and closed on 15th December. We hope you have enjoyed visiting our stations over the festive period and were encouraged to have a look at the displays and vote for your favourites.

Our volunteers are renowned for providing a warm welcome at stations when the judges visit. Once scored and winners of categories decided, our annual awards ceremony where certificates and prizes were given out at our annual awards ceremony, was this year hosted by Friends of Templecombe Station.

Throughout the year many of you express appreciation of the efforts made at your local stations and last year we introduced a public vote inviting you to score station displays. The station with the most overall votes won a 'ger' big shiny trophy, sponsored by Blackmore Vale Line Community Rail Partnership.

Last year the trophy was won by Friends of Templecombe Station and is now in the hands of this year's winners Friends of Crewkerne Station.

Pictured left to right;

Anne Dibble, Booking Hall Clerk and friend of Templecombe Station, handing over the trophy to this year's winners, Friends of Crewkerne Station Chairman Gail Coleshill with judges Paul Brighten and Louise Burks.



Christmas Judging Team



Judging Team left to right

Christmas Judges, Paul Brighten, Derek Beer, Andy Oliver (FOGS), Belinda Ridout (FOGS), Louise Burks and Glen Hatherley.



Superb Snowmen at Axminster Station

Axminster station is part of the Devon and Cornwall Community Rail Partnership, however we all share the same station manager. This year Glen was keen to recognise the efforts of Leanne,— pictured with her snowmen— as part of our awards. Leanne is one of the booking hall team.

Leanne's mother first made a snowman for the station and each year Leanne carries on the tradition. There are now eight hand-crafted snowmen, each wearing a stylish hat and scarf. The largest is nearly three foot tall and sports a super moustache!



Tisbury Station at Christmas



Talented Sarah scoops the award for Tisbury Station for our 'Deck the Halls' - Best Christmas Garland. A creative and imaginative make from used tickets signed with festive greetings from passengers. Excellent work. Well done Sarah.



Friends of Gillingham shows how Christmas is good for your Elf!



Superb work Linda and Richard Hart for a fabulous Christmas Elf winning Gillingham Station the finest hand-crafted Christmas decoration award.



A well deserved award won against stiff competition.



Yeovil Junction - Best Ticket Window



Helena, Paul and James at Yeovil Junction win Judges Discretionary Award for Best Ticket Window.



Call for volunteers. New volunteers are welcome at Yeovil Junction, You can always let Claire or Steve know at the Café if you are interested, or you can contact John Whitfield, vice chairman of BVCRP and representative for Yeovil Junction. John's email is john@kimarg.co.uk



Yeovil Railway Centre wins Ritziest Christmas Train and Best Christmas Feature



Blackmore Vale Line
Community Rail
Partnership



Community
Rail at
Christmas 2018
South Western
Railway



www.blackmorevaletrains.com

Decoration Station 2018

Best Christmas Feature

WINNER
Yeovil Railway
Centre



Blackmore Vale Line
Community Rail
Partnership



Community
Rail at
Christmas 2018
South Western
Railway



www.blackmorevaletrains.com

Decoration Station 2018

Scenic Railway
Ritziest Christmas Train

WINNER
Yeovil Railway
Centre



Friends of Crewkerne Station Wins Station with the most votes

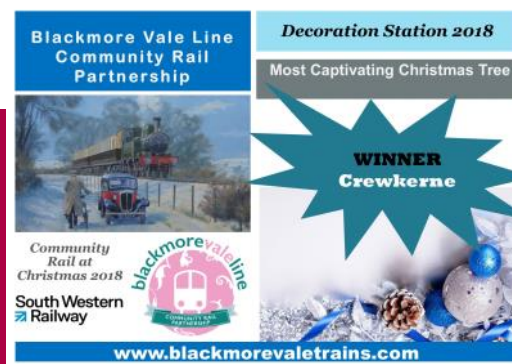


The Friends of Crewkerne Station win Best Christmas Tree award and the Blackmore Vale Line CRP Trophy for the station gaining the most public votes. Excellent work everyone. Well done!

Photo shows from the left Gail Coleshill, Annabella Van Clute, Heather Sergeant, Tony Reese, Judy Kyle with the cup, Henryk Plotzek and Jo Spitelier pausing from packing up the decorations



The Community Rail Partnership is promoting rail travel between the towns from Tisbury to Crewkerne on South Western Railway's Waterloo to Exeter route. Each station also has a group of 'Friends' who visit the station regularly to help keep it an inviting venue for passengers. They improve the facilities by perhaps adding a piece of station equipment like seats, keep it litter free, install plants and planters and report anything untoward to the Railway Company.



Friends of Crewkerne Station Awards

Gail writes 'This year the Blackmore Vale Community Rail Partnership took part in a light hearted competition between the stations for decorating the

waiting rooms and platforms. Each station won an award for what the public thought they did best and Crewkerne station won the cup for the most votes cast in all the stations.

At Christmas time passengers are treated to an exhibition of Christmas cheer with decorations around the waiting room, decorated trees and lights and this year the Friends of Crewkerne Station were giving away mince pies from the station cafe @Sue's.

The Friends of Crewkerne Station put in a lot hard work and imagination, but also had great fun, decorating not only the tree in the station but also a tree in St Bartholomew's Christmas Tree festival. They are grateful for the help they had from the Castle Garden Centre in Sherborne which gave them a generous discount for plants and decorations. They were delighted that people appreciated their efforts which was shown by the votes cast for their tree in the church and the number of voting slips returned in the Crewkerne Station waiting room. Booking Office clerk Judy Kyle joined in the fun by giving out voting slips with the tickets she sold.

Chair of FOCS Tony Reese was full of praise for the volunteers and wants to thank all the people who voted for the Friends trees.

He said

"We have a group of dedicated volunteers at the station who put lots of effort into keeping the station a pleasant and delightful place to spend time. It is great to know that the travelling public and residents appreciate our work. By voting for us they have made us the tied most popular tree at the church and enabled us to win the BVCPR annual cup for the most votes in the stations.

Anyone interested in joining the friends can visit the website

<http://www.crewkernetown.org/friendsofcrewkernestation>

or contact Chairman Tony Reese on 07967947335

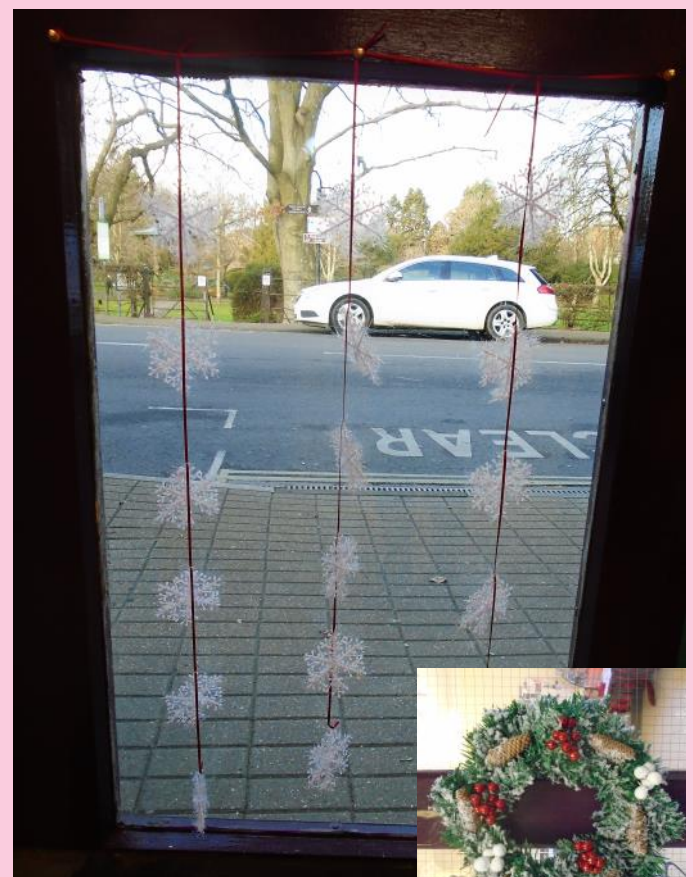
Contact Gail Coleshill, Secretary, Friends of Crewkerne Station 07811657798.

Stars Sparkle at Sherborne station



Jacquie Wood of Sherborne Station Café is the winner of this year's award for those who go above and beyond the call of duty.

Congratulations Jacquie



Friends of Templecombe Station gain a handful of awards from Blackmore Vale Line CRP.

'Coolest Santa' award



**Blackmore Vale Line
Community Rail
Partnership**

Community
Rail at
Christmas 2018

South Western
Railway

www.blackmorevaletrains.com

Decoration Station 2018

**Best External Christmas
Light Display**
Judges Discretionary Award

WINNER
Templecombe

**Blackmore Vale Line
Community Rail
Partnership**

Community
Rail at
Christmas 2018

South Western
Railway

www.blackmorevaletrains.com

Decoration Station 2018

Winter Wonderland
Most Imaginative Window or Table Scene

WINNER
Templecombe

Talented crafter Chris Hillman carried off the award for 'Winter Wonderland' most imaginative window or table display. Fab replica of St Mary's Church.



Anne Dibble won the award for outstanding effort during 2018.

**Blackmore Vale Line
Community Rail
Partnership**

Community
Rail at
Christmas 2018

South Western
Railway

www.blackmorevaletrains.com

*Blackmore Vale Line Community Rail Partnership
Special Award of Recognition*

**For Outstanding Effort
in 2018**

WINNER
Anne Dibble
**Templecombe
Station**



Blackmore Vale Line
Community Rail
Partnership

Decoration Station 2018

Most Festive Booking Hall



Community
Rail at
Christmas 2018
South Western
Railway



www.blackmorevaletrains.com



Friends of Templecombe Station are
hosting a series of coffee mornings
providing delicious home-made
refreshments for rail-users and visitors
who pop in for a chat.

Anne's cup cakes are so scrumptious!

All are welcome

The Lost Railway Workers of the First World War



Work is continuing to find the lost railway workers of the First World War and there will be a special newsletter devoted to our efforts next time.

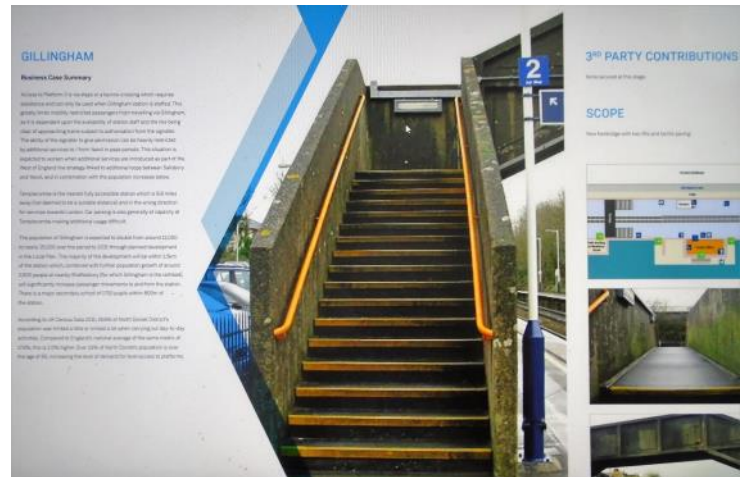
New Community Rail Manager Andy Harrowell has put forward two of our stations, Gillingham and Yeovil Junction, for DfT funding

Andy says 'this is a £330 million programme which all train operators bid into, for the DfT to then decide how the funds will be split across the country. There are a number of criteria that stations are assessed on and SWR's Regional Development Managers worked closely with stakeholders to help create the final shortlist, balancing passenger need, with feasibility and third party funding. We expect a decision in late spring on whether any of our bids were successful. We will then work with Network Rail, who deliver the projects over the next five years.

As there is a lot of submissions from across the country we can make no guarantees if any of our stations will be selected for this funding, however I thought you might find this of interest."

Stations on CRP lines include: Blackmore Vale Line – Gillingham and Yeovil Junction. The long hours put in by our Vice Chairman John Whitfield, to progress the footbridge concerns at Yeovil Junction have been worthwhile. Thanks John.

Our website www.blackmorevaletrains.com has a downloadable booklet outlining which stations SWR put forward for the Department for Transport's Access for All Funding.



Contact Us

All the latest news, events and station information can be found on our website



BLACKMORE VALE LINE
COMMUNITY RAIL PARTNERSHIP
Partnership Officer Caroline Rowland

MOBILE: 07933 212 117
E: blackmorevalecrp@gmail.com
www.blackmorevaletrains.com
Twitter Blackmore Vale CRP@crpVale

if you would like to get involved and do something positive for your local station.

Email: blackmorevalecrp@gmail.com

www.blackmorevaletrains.com